

## PROPOSED CAPITAL IMPROVEMENT PROJECTS

**Project Title:** MARVIN CIRCLE  
**Project Location/Limits:** FROM PROPOSED ROW TO CUL-DE-SAC  
**CIP Number:** S10  
**Facility Type:** STREET

### Project Description and Justification

This project is to replace the existing concrete pavement, curb, and driveways with 8" concrete pavement and 4"x12" curb. The existing water line will be replaced with an 8" water line; existing inlets and associated drainage will be replaced.

### Project Cost Estimates:

Project Cost	Prior Funding	COST BY FISCAL YEAR					TOTAL
		FY19	FY20	FY21	FY22	FY23+	
Engineering/Planning		\$ 42,494					\$ 42,494
Land/Easements Acq.							\$ -
Construction		\$ 212,468					\$ 212,468
<b>Total Cost</b>	<b>\$ -</b>	<b>\$ 254,961</b>	<b>\$ -</b>	<b>\$ -</b>	<b>\$ -</b>	<b>\$ -</b>	<b>\$ 254,961</b>

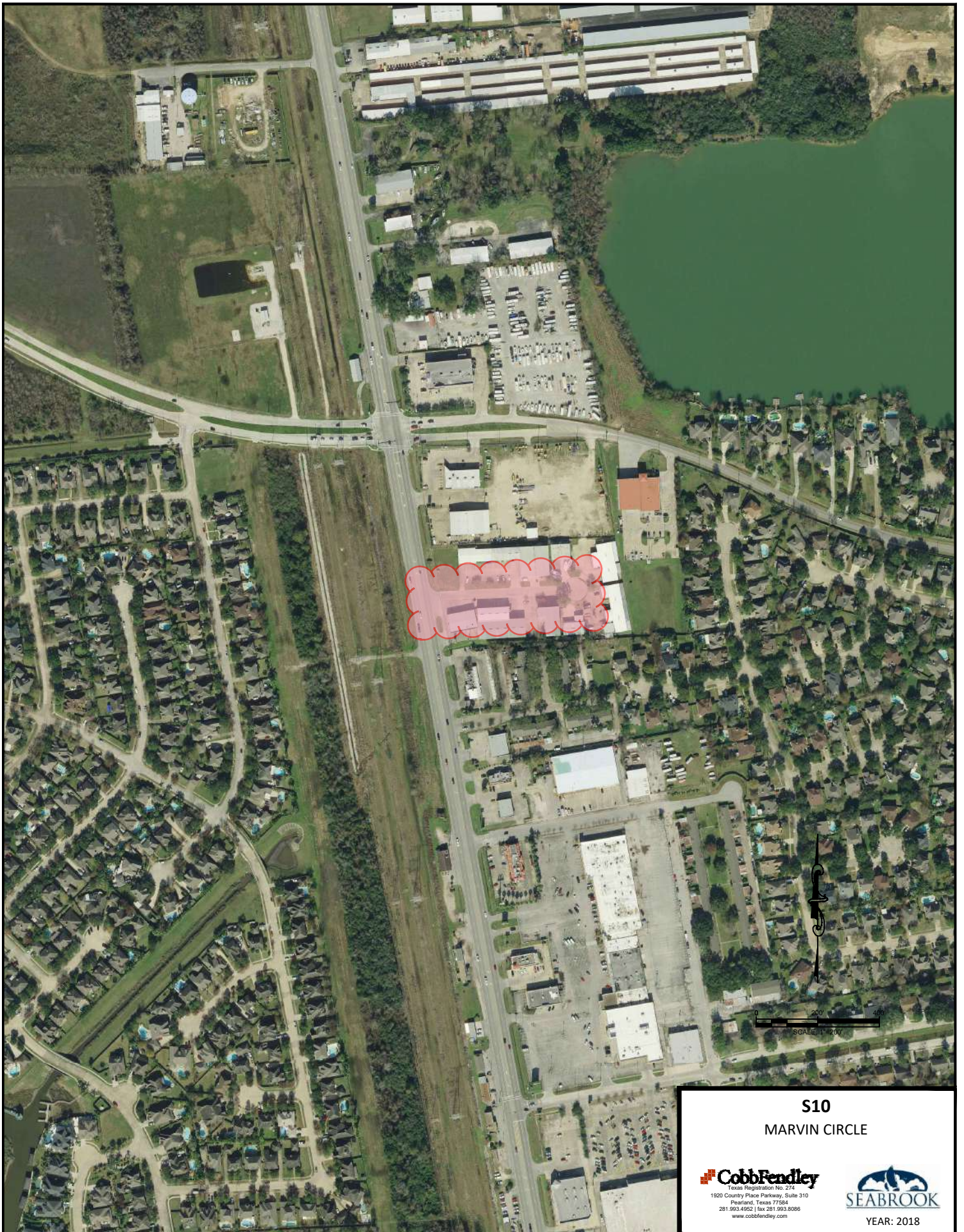
  

Funding Source	Prior Funding	FUNDING SOURCES BY FISCAL YEAR					TOTAL
		FY19	FY20	FY21	FY22	FY23+	
General Fund -Cash		\$ 254,961					\$ 254,961
Certificates of Obligation							\$ -
Prior Certificates of Obligation							\$ -
General Obligation Bonds							\$ -
Prior Bonds							\$ -
Future Bonds							\$ -
SEDC 4B Funds							\$ -
Water/Sewer Revenue Bonds							\$ -
Enterprise Utility Fund - Cash							\$ -
Impact Fees							\$ -
Developer Contribution							\$ -
Potential Grant							\$ -
Fund 28 Gen CIP							\$ -
Other: ____ (Fund/Agency)							\$ -
<b>Total Funding</b>	<b>\$ -</b>	<b>\$ 254,961</b>	<b>\$ -</b>	<b>\$ -</b>	<b>\$ -</b>	<b>\$ -</b>	<b>\$ 254,961</b>

Description	Quantity	Unit	Unit Price	Total Cost
<b>Mobilization</b>	1	LS	\$ 10,000.00	\$ 10,000.00
Tree and Plant Protection	1	LS	\$ 3,000.00	\$ 3,000.00
Pavement	1665	SY	\$ 8.00	\$ 13,320.00
Remove Existing Driveways	300	SY	\$ 8.00	\$ 2,400.00
Lime Stabilized Subgrade	1778	SY	\$ 4.25	\$ 7,556.50
Type B, Commerical Lime Slurry	32	TON	\$ 190.00	\$ 6,080.00
6" Black Base (Type B)	55	TON	\$ 100.00	\$ 5,500.00
2" HMAc	18	TON	\$ 175.00	\$ 3,150.00
8" Reinforced Concrete Pavement	300	SY	\$ 60.00	\$ 18,000.00
Concrete Pavement for Driveways	2700	SF	\$ 7.00	\$ 18,900.00
4 x12" Concrete Curb	1000	LF	\$ 5.00	\$ 5,000.00
Type C Inlet	2	EA	\$ 3,750.00	\$ 7,500.00
Concrete Pipe	200	LF	\$ 115.00	\$ 23,000.00
Wet Connection to Existing WL	1	EA	\$ 3,500.00	\$ 3,500.00
8-Inch PVC Water Line	500	LF	\$ 50.00	\$ 25,000.00
Fire Hydrant Assembly	1	EA	\$ 4,500.00	\$ 4,500.00
Water Services	8	EA	\$ 1,200.00	\$ 9,600.00
Erosion/Sediment Control	2	EA	\$ 350.00	\$ 700.00
SWPPP Inspection and Maintenance	1	LS	\$ 5,000.00	\$ 5,000.00
Inlet Protection Barrier	2	EA	\$ 100.00	\$ 200.00
Sodding for Erosion Control	30	SY	\$ 5.00	\$ 150.00
Traffic Control and Regulation	1	LS	\$ 5,000.00	\$ 5,000.00

Project Contingencies (20%)	\$ 35,411.30
<b>Construction Total</b>	<b>\$ 212,467.80</b>

**Comments/Special Project Notes:**



**S10**  
MARVIN CIRCLE

**CobbFendley**  
Texas Registration No. 274  
1920 Country Place Parkway, Suite 310  
Pasland, Texas 77564  
281.993.4952 | fax 281.993.8086  
www.cobbfendley.com

**SEABROOK**  
YEAR: 2018